



Lambastadir Guesthouse is a new, quiet and modern, farm holiday guesthouse. It is located in the center of South Iceland, only 45 minutes drive from Reykjavik. The guesthouse is family owned and our special pleasure is to inform our guests about where to go, what to do and to help guests to organize their holidays. We feel our guesthouse perfectly located for those who want to visit historical places and Iceland's unique nature. In our neighborhood we can find numerous restaurants, golf courses, swimming pools, museums and all kind of activities.

OUR LOCATION 63°56,7' N 20°49,2' W

Distance to
Lambastadir
Guesthouse:

Keflavik, 103 km.
Reykjavik, 65 km.
Selfoss, 8 km.



Prices: (Breakfast included)

10th of May - 31st of May 2012:

Room for two..... 14.900 ISK.
Single room, request via E-mail 9.900 ISK.
Baby cots, request via E-mail..... 2.500 ISK.

01st of June - 31st of August 2012:

Room for two..... 22.900 ISK.
Single room, request via E-mail 15.900 ISK.
Baby cots, request via E-mail..... 3.500 ISK.

01st of September - 30th of November 2012:

Room for two..... 14.900 ISK.
Single room, request via E-mail 10.900 ISK.
Baby cots, request via E-mail..... 2.500 ISK.

Lambastadir Guesthouse - Floahreppur - 801 Selfoss - Iceland

Tel: +354 777 0705 - Email: info@lambastadir.is - Website: www.lambastadir.is



The real Icelandic culture found in the country side



New, quiet and modern, farm holiday guesthouse.
Perfectly located for those who want to visit South Iceland.

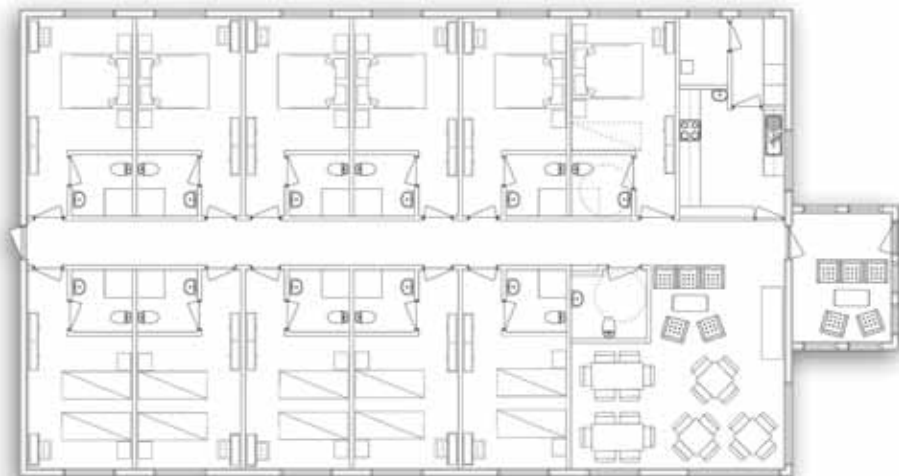
THE FACILITIES

- Small and quiet, farm holiday guesthouse.
- 11 comfortable and cozy rooms with private bathroom.
- All rooms have black out curtains.
- Free wireless internet access.
- Geothermal heated hot tub.
- Free parking on site, reservation not needed.
- Sheep and horses are in fence close to the guesthouse.
- Geese, ducks and rabbits are free on our farm.
- Breakfast buffet served in the morning.
- Cafe, drinks and sandwiches served all day at a reasonable price.



WHY YOU SHOULD CHOOSE LAMBASTADIR GUESTHOUSE

- New comfortable facility (see above).
- The staff is prepared to inform you where to go and what to do.
- You are in contact with the real Icelandic culture found in the country side.
- All necessary service, such as restaurants, supermarkets, and swimming pools, only 7 km away from us at Selfoss.
- Perfect location for day tours from our guesthouse.



PERFECT LOCATION FOR DAY TOURS FROM OUR GUESTHOUSE

We feel our guesthouse perfectly located for those who want to visit historical places and Iceland's unique nature in the South part of the country. Here we give you idea of where to go. The distance here below is from our guesthouse and then back.

THE GOLDEN FALLS

Driving distance: 180 km. Duration: 5 - 8 hours.



THE BLUE LAGOON

Driving distance: 194 km. Duration: 5 - 8 hours.



THE SOUTH COAST TO VIK

Driving distance: 270 km. Duration: 8 - 9 hours.



THE WESTMAN ISLANDS

Driving distance: 180 km. Duration: 9 - 10 hours.



LANDMANNALAUGAR 4 X 4

Driving distance: 270 km. Duration: 8 - 9 hours.



FJALLABAK - VIK 4 X 4

Driving distance: 350 km. Duration: 9 - 10 hours.



THORSMORK 4 X 4

Driving distance: 250 km. Duration: 8 - 9 hours.



JOKULSARLAGOON

Driving distance: 270 km. Duration: 10 - 13 hours.

